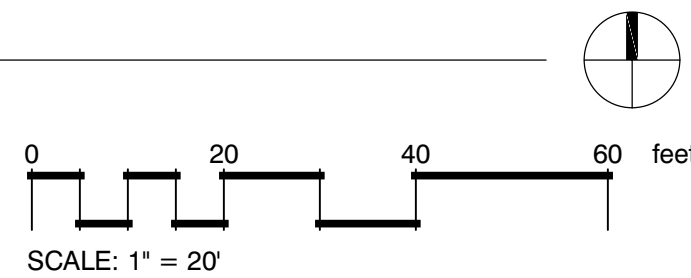


AS PER CITY ORDINANCE(S) §50.02(A) (4) AND §100.35(E), THAT LANDSCAPING MATERIALS OTHER THAN SOD ARE NOT ALLOWED WITHIN (5') FIVE FEET OF ANY PORTION OF CITY OWNED UTILITIES WITHIN THE PUBLIC STREET RIGHT-OF-WAY INCLUDING METERS, HYDRANTS, SERVICE LINES ETC. ALSO, PLEASE NOTE THAT NO TREES, SHRUBBERY OR OBSTRUCTION SHALL BE PLACED WITHIN A 3' RADIUS OF A CITY-OWNED SEWER LATERAL CLEANOUT OR WATER &/OR REUSE METER.

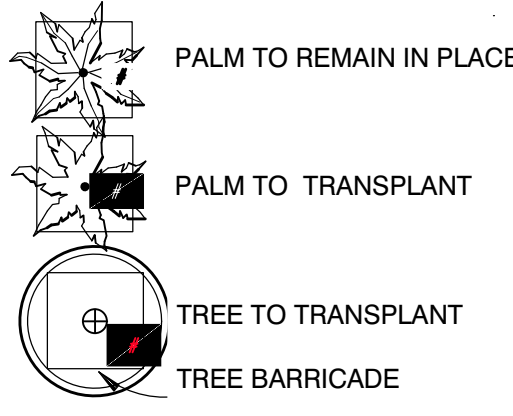
LANDSCAPE PLAN
SCALE: 1" = 20'-0"



SEE SHEET L-2.1 FOR COMPLETE PLANT LIST SPECIFICATION

ALL HEDGES ABUTTING CITY RIGHTS OF WAY ARE MAINTAINED AT A HEIGHT NO GREATER THAN 24"

EXISTING TREE KEY



PLANT SCHEDULE

SYMBOL	CODE	QTY	BOTANICAL NAME	COMMON NAME
TREES				
	CD	1	Coccoloba diversifolia	Pigeon Plum
	CE	9	Conocarpus erectus	Green Buttonwood
	CS2	4	Conocarpus erectus 'Sericeus'	Silver Buttonwood
	CS	7	Cordia sebestena	Orange Geiger Tree
	PM	1	Phoenix dactylifera 'Medjool'	Medjool Date Palm
SHRUBS				
	YE	9	Yucca elephantipes	Soft Spine Yucca
SHRUB AREAS				
	AD	152	Alternanthera dentata	Little Ruby
	CH	102	Chrysobalanus icaco	Cocoplum
	CG	233	Clusia guttifera	Small leaf Clusia
	EL	251	Ernodea littoralis	Golden Creeper
	FG	46	Ficus microcarpa 'Green Island'	Green Island Ficus
	HD	171 sf	Helianthus debilis	Dune Sunflower
	HL	103	Hymenocallis latifolia	Spider Lily
	MC	134	Muhlenbergia capillaris	Pink Muhly
	PG	202	Portulaca grandiflora	Purslane
	TF	12	Tripsacum dactyloides	Fakahatchee
	US	1,668	Uniola paniculata	Sea Oats
	ZP	138	Zamia pumila	Coontie
GROUND COVERS				
	PV	6,264 sf	Paspalum vaginatum	Seashore Paspalum



888 s andrews avenue, suite 300
Fort Lauderdale FL 33316
office: 954.224.0432
LA# 6666983

DESIGNED DRAWN CHECKED

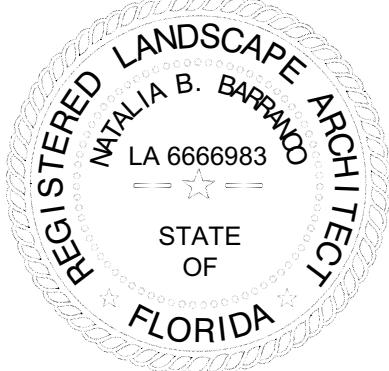
REVISIONS

DATE: 1/24/2024 COMM: 22019

580 BRINY AVE.

580 BRINY AVE.
POMPANO BEACH, FL

Natalia Barranco
c=US, st=Florida, l=Fort lauderdale,
o=Barranco rla inc., cn=Natalia
Barranco, email=natalia@b-rla.com
2024.04.07 20:50:34 -04'00'



DRC
L-2.0
PZ24-12000003
05/15/2024